



RP-i31DE RP-i38DE

DANGER!
The engine oil was drained for shipping.
Before first use,
Engine oil needs to be refilled!



Art. No.: RPi38DE



Art. No.: RPi31DE



original operating instructions
vibrating plate with forward and reverse motion

D



DANGER! Before assembly and before commissioning, read the entire text of the operating instructions. Use these instructions to familiarize yourself with the device, its correct use and the safety instructions.

A NOTICE

According to the applicable product liability law, the manufacturer of this device is not liable for damages caused to or by this device in the following cases:

- improper handling,*
- Failure to follow the operating instructions,*
- Repair by third parties, unauthorized specialists,*
- Installation and replacement of non-original spare parts,*
- improper use. The risk is borne solely by the user.*

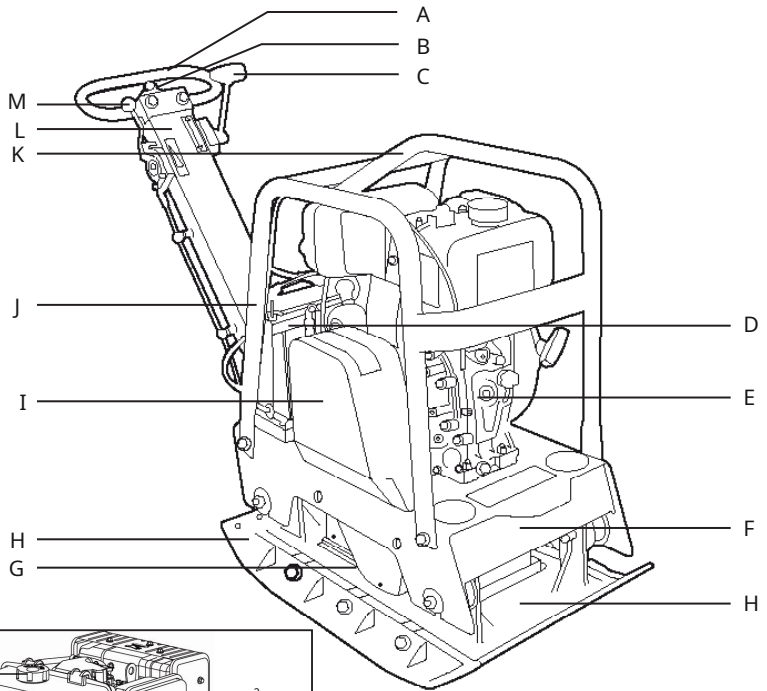
DANGER!

When delivered, the device does not contain any engine oil.

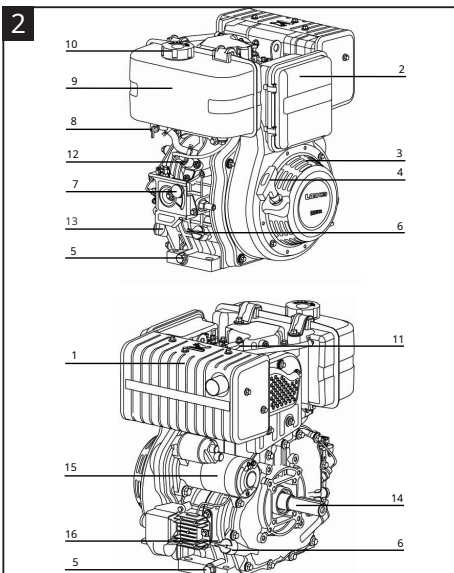
Graphics, images, texts and layouts created by LUMAG GmbH are subject to copyright and the laws protecting intellectual property. Reproduction or use of such graphics, images, texts and layouts in other electronic or printed publications is not permitted without the express consent of LUMAG GmbH.

RP-i31DE, RP-i38DE

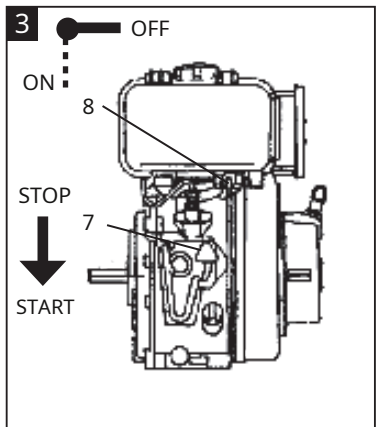
1



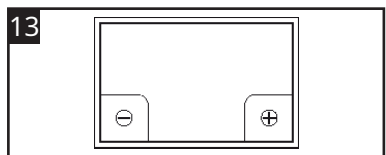
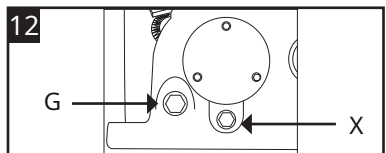
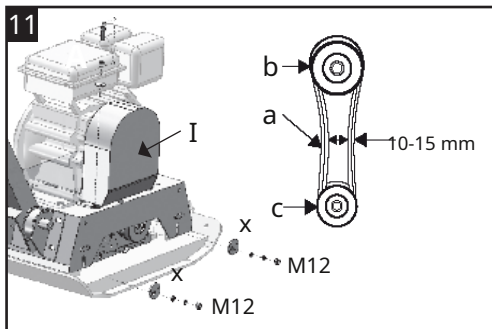
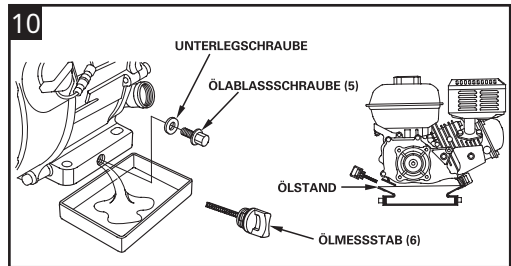
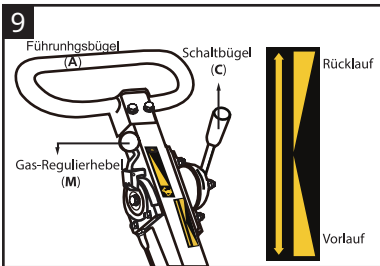
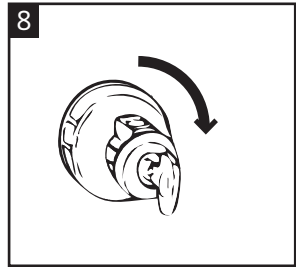
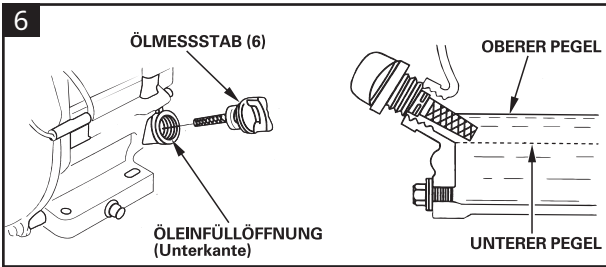
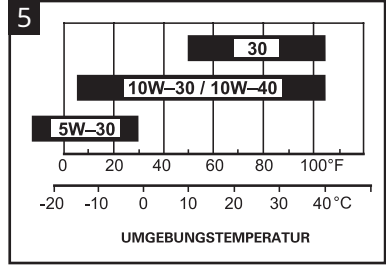
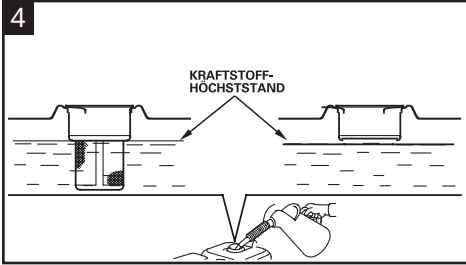
2



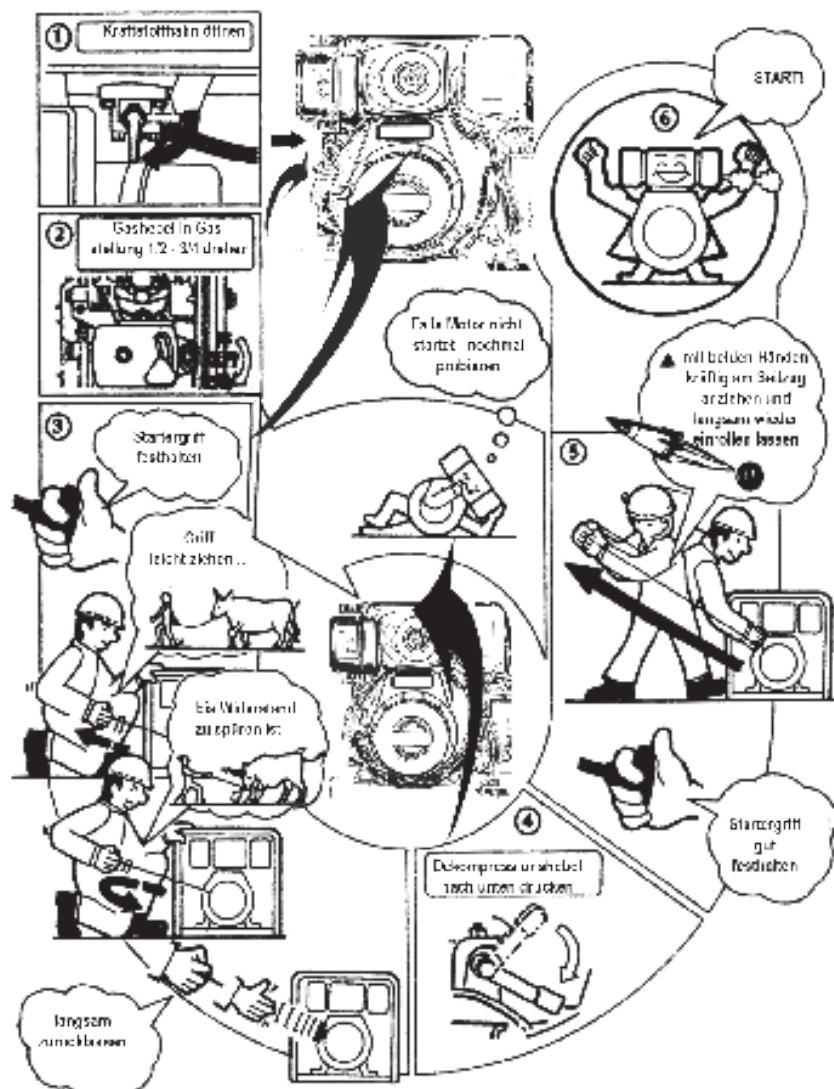
3



— Type and design subject to change. —



7



CONTENTS

- 1. Introduction**
- 2. Intended use**
- 3. Safety instructions**
 - 3.1 General safety instructions
 - 3.2 Operational safety
 - 3.3 Safety when using combustion engines
 - 3.4 Service security
 - 3.5 Warning and information symbols used
- 4. Controls**
- 5. Machine transport**
 - 5.1 Mechanical lifting
 - 5.2 Moving the machine on the ground
 - 5.3 Storage
- 6. Commissioning**
 - 6.1 Diesel fuel
 - 6.2 Drive motor
 - 6.3 Before commissioning
 - 6.4 Hand start
 - 6.5 Electric start
 - 6.6 Turning off the engine
- 7th operation**
 - 7.1 Forward and reverse travel
 - 7.2 Recommendation for compaction
 - 7.3 Compaction without mounting plate
- 8. Maintenance**
 - 8.1 Maintenance plan
 - 8.2 Engine oil
 - 8.3 Dry air filter
 - 8.4 Drive belt
 - 8.5 Lubrication of the exciter
 - 8.6 Battery
 - 8.7 Cleaning the plate
- 9. Environment**
- 10. Troubleshooting**
- 11. Technical data**
- 12. Warranty / Guarantee / Customer Service**
- 13. EC Declaration of Conformity**
- 14. Components of the machine**

1. INTRODUCTION

This manual contains information and procedures for the safe operation and maintenance of this model. For your own safety and to prevent injury, carefully read, understand, and follow the safety instructions in this manual at all times.

2. INTENDED USE

The machine is suitable for compacting loose, granular soils, gravel and sand in trenches and surface compaction, as well as for vibrating interlocking stone paving. The machine is particularly suitable for narrow areas due to the stepless switchability of the forward and reverse motion.

However, the device is not suitable for compacting soils with a high clay content.

3. SAFETY INSTRUCTIONS

When using this vibrating plate, the following basic safety measures must be observed to protect against the risk of injury, fire and property damage.

Read all of these instructions before using this appliance and keep them for future reference.

The information concerning your personal safety is highlighted by a warning triangle; information concerning property damage alone is provided without a warning triangle.

GEFAHR

Failure to follow these instructions may result in serious danger to life or death.

WARNUNG

Failure to follow these instructions may result in death or serious injury.

VORSICHT

Failure to follow these instructions may result in minor to moderate injury.

A NOTICE

Failure to follow these instructions may result in damage to the engine or other property.

In addition, the operating instructions contain other important text passages marked with the word **DANGER** are marked.

3.1 General safety instructions

1. Keep your work area tidy
 - Disorder in the work area can lead to accidents.
2. Consider environmental influences
 - Never operate the power tool in enclosed or poorly ventilated areas. When the engine is running, poisonous gases are produced. These gases may be odorless and invisible.
 - Do not expose the power tool to rain.
 - Do not use the power tool in damp or wet environments.
 - Make sure you have a secure footing on uneven terrain.
 - Be careful of shafts and excavations that are not cordoned off.
 - Ensure good lighting while working.
 - Do not use the power tool in easily flammable vegetation or where there is a risk of fire or explosion.
 - If it is dry, have a fire extinguisher ready (fire hazard).
3. Keep other people away
 - Do not allow other people, especially children and young people, to use the power tool. Keep them away from your work area.
4. Store unused tools safely
 - When not in use, tools should be stored in a dry, high or locked place, out of the reach of children.
5. Do not overload your machine
 - You work better and more safely within the specified performance range.
6. Use the right tool
 - Do not use low-power tools for heavy work.
 - Use the tools only for the purposes for which they were designed.
 - Always keep the tool clean.
7. Wear appropriate clothing
 - Do not wear loose clothing or jewelry as they could get caught in moving parts.
 - Wear sturdy work gloves, leather gloves provide good protection.
 - Wear safety shoes.
 - Always wear a work suit made of sturdy material when carrying out any work.
 - If you have long hair, wear a hair net and protective helmet.
8. Use personal protective equipment (PPE)
 - Always wear head, eye, hand, foot and hearing protection.
 - Use respiratory protection when carrying out work that generates dust.
9. Avoid abnormal posture
 - Ensure you have a secure footing and keep your balance at all times.
10. Do not leave any tool keys in the
 - Before switching on, check that keys and adjustment tools are removed.
11. Be attentive
 - Be careful what you are doing. Be sensible when working. Do not use power tools when you are not concentrating.
 - Never work under the influence of alcohol, drugs, medication or other substances that may impair vision, dexterity or judgment.
12. Filling up with fuel
 - Always switch off the engine before filling.

SAFETY INSTRUCTIONS

- Always open the tank cap carefully so that the existing excess pressure can be released slowly.
 - Be careful not to overfill the tank with fuel. If you spill fuel, remove it immediately and clean the machine.
 - Close the screw plug on the fuel tank tightly to prevent it from coming loose due to vibrations during work.
13. Take breaks from work in good time.

 VORSICHT

- Prolonged use of the power tool can lead to vibration-related circulatory problems in the fingers, hands or wrists. Symptoms such as numbness in body parts, tickling, pain, stinging, changes in skin color or skin may occur. If these symptoms are noticed, consult a doctor.
 - However, suitable gloves and regular breaks can extend the duration of use. However, please note that personal predisposition to poor circulation and/or high grip forces when working will reduce the duration of use.
20. Check the motor device
- Before further use of the power tool, protective devices or slightly damaged parts must be carefully checked to ensure that they are functioning properly and as intended.
 - Check that the moving parts are working properly and are not jammed or damaged. All parts must be correctly fitted and meet all the conditions to ensure the correct operation of the power tool.
 - Damaged protective devices and parts must be repaired or replaced as intended by an approved specialist workshop, unless otherwise stated in the operating instructions.
 - Defective switches must be replaced by a service workshop.
 - Do not use any power tool where the switch cannot be turned on and off.

21st ** WARNING**

- The use of other attachments or accessories that are not expressly recommended may pose a risk of injury to you.
22. Use only approved parts
- This machine complies with the relevant safety regulations. Repairs must only be carried out by an authorized service center or our service team using original spare parts; otherwise, accidents may occur to the user.

3.2 Operational safety** WARNING**

Familiarize yourself with the machine. Proper training is a prerequisite for working safely with this machine. Incorrect operation or operation by untrained personnel can be dangerous. Read the operating instructions for this machine and the engine manual carefully and familiarize yourself with the controls.

Inexperienced operators must be instructed by personnel who are familiar with the machine. Only then may they operate the machine.

- **NEVER** allow untrained personnel and persons under 18 years of age to operate this machine. The personnel operating this equipment must be familiar with the risks and dangers associated with its operation.
- **NEVER** touch the engine or muffler while the engine is running or shortly after it has been switched off. These areas become very hot and can cause burns.
- **ALWAYS** use original accessories. The use of other tools and accessories can lead to unforeseeable damage to the machine or pose a risk of injury to you.
- **NEVER** operate the machine without a belt guard. Open drive belts are a source of danger and can cause serious injuries.
- **NEVER** leave the device running unattended.
- **ALWAYS** ensure that areas to be compacted do not contain live cables, gases, water or communication lines.
- **ALWAYS** ensure that the side walls of trenches, pits, heaps and embankment edges are stable and do not collapse due to vibration during compaction. Be careful of the risk of falling or tipping over!
- **ALWAYS** take regular breaks when operating the machine. Vibration or repetitive work processes can cause damage to hands and arms.
- **ALWAYS** ensure that the operator is familiar with the appropriate safety precautions and operating procedures before using the plate compactor.
- **ALWAYS** - if necessary - wear suitable protective clothing.
 - Hearing protection to reduce the risk of hearing loss.
 - Respiratory protection to reduce the risk of inhaling hazardous dust.
 - Eye protection to reduce the risk of eye damage.
 - Wear sturdy work gloves, leather gloves provide good protection.
 - Wear safety shoes.
 - Wear a protective helmet appropriate for the work environment to protect against flying debris.
- **ALWAYS** wear hearing protection when operating the machine.

DANGER! Noise can be harmful to health. If the permissible noise level of 80 dB(A) is exceeded, ear protection must be worn

- **ALWAYS** close the fuel tap when the machine is not in use.
- **NEVER** use the choke lever to stop the engine.
- **ALWAYS** store the machine properly when not in use. Choose a safe location so that the machine cannot be started by unauthorized persons. Do not place the device unprotected outdoors or in a damp environment.
- **ALWAYS** before commissioning, check that protective devices and protective plates are functioning properly and as intended.
 - Check that moving parts are working properly and are not jammed or damaged. All parts must meet all requirements to ensure the correct operation of the device.
 - Damaged protective devices and parts must be repaired or replaced as intended by an approved specialist workshop, unless otherwise stated in the operating instructions.

SAFETY INSTRUCTIONS

- **ALWAYS** Read the operating instructions before operating the appliance. Instructions on dangers, warnings and precautions must be strictly observed in order to minimize the risk of personal injury, property damage and incorrect servicing.

3.3 Safety when using combustion engines

GEFAHR

Internal combustion engines pose a particular danger during operation and when refueling. Always read and observe the warnings in the engine manual and the additional safety instructions listed further down in this manual. Failure to observe these instructions could result in serious or even fatal injuries.

- Let the machine **NOT** indoors, in garages, deep ditches or enclosed areas. Engine exhaust contains poisonous carbon monoxide. Exposure to carbon monoxide can result in unconsciousness and death.
- Operate the device **NOT** near an open flame.
- Do you smoke **NOT** when working with the vibrating plate.
- Check **ALWAYS** Check the fuel lines, tank cap and fuel tank for leaks or cracks. The device must not be operated if such damage occurs.
- Refuel the device **NOT** when the engine is still hot or while it is running.
- Fill the fuel tank **ALWAYS** in a well-ventilated area.
- Refuel the machine **NOT** near an open flame.
- Do you smoke **NOT** when refueling.
- Spill when refueling **NONE** Fuel.
- Make sure that after refueling you **ALWAYS** Put the tank cap on and close it tightly.

3.4 Service security

WARNUNG

Improper maintenance or failure to observe or resolve a problem can become a source of danger during operation. Only operate machines that have been regularly and correctly maintained. This is the only way you can be sure that you will operate your device safely, economically and without problems. And for a long time to come.

- The machine **NOT** Do not clean, maintain, adjust or repair the machine while it is running. Moving parts can cause serious injury.
- Before maintenance and repair work **ALWAYS** Disconnect the battery. This will prevent the vehicle from starting accidentally.
- **NO** Do not use gasoline or other flammable solvents to clean machine parts. Vapors from fuels and solvents can explode.
- Near the exhaust muffler **NO** Stack paper, cardboard or similar material. The hot exhaust muffler can cause a fire.

- Damaged or worn machine parts **ALWAYS** replace with new original spare parts.
- The stickers on the machine warn of dangers. The machine **ALWAYS** keep clean and replace damaged stickers if necessary.

Please also observe the relevant regulations and guidelines applicable in your country.

3.5 Warning and information symbols used

A NOTICE

The machine is delivered without engine oil. The first thing to do before using it for the first time is to fill it with engine oil. Failure to do so can lead to irreparable damage to the engine.



DANGER

- * The engine exhaust contains poisonous carbon monoxide. Do not run the engine in an enclosed area.
- * Read the machine's operating instructions and the engine manual before operating.
- * Keep the engine away from heat, sparks and flames.
- * Fuel is extremely flammable and explosive. Turn off the engine and allow it to cool before refueling.



COMMANDMENTS

- * Before commissioning, read and follow the operating instructions provided. Otherwise, the risk of injury to the operator and other persons increases.
- * Always wear hearing and eye protection when operating the machine. Wear a safety helmet appropriate to the work environment.
- * Wear safety shoes with steel toe caps.

WARNING

- * Getting caught in the rotating belt will cause hand injury. Always wear the belt guard.
- * Hot surface! Contact can cause burns. Only carry out maintenance, servicing and cleaning work when the engine has cooled down.

SAFETY INSTRUCTIONS



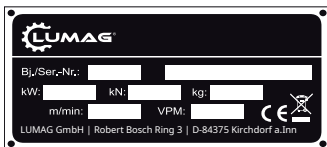
CAUTION!
* lifting point



Controlling the speed:
Turtle means SLOW or IDLE Rabbit means FULL SPEED or FAST



Control of the running direction:
forward and backward movement



NAMEPLATE
Equipped with model name, year of manufacture and serial number. Please always state this information when ordering spare parts or for service information.

A NOTICE	
NOTICE	
POKYN	
WSKAZÓWKA	
<p>Engine oil must be topped up before first use. Incorrect oil filling can lead to irreparable damage to the engine. In this case, the seller and manufacturer will not provide any warranty.</p>	
<p>Oil has been drained for transport. Failure to fill engine sump with oil before starting engine will result in permanent damage and will void engine warranty.</p>	
<p>Przed pierwszym użyciem do poziomu musi być dobrane motoryczne oleje. Niewłaściwe napełnienie zbiornika może spowodować trwałą uszkodzenie silnika. W tym przypadku sprzedawca i producent nie ponosi odpowiedzialności.</p>	
<p>Przed pierwszym rozruchem należy wlać olej silnikowy. Nieprawidłowe napełnienie zbiornika może doprowadzić do nieodwracalnych szkód silnika. W tym wypadku sprzedawca, jak i producent odpowiedzialni nie są za szkody wynikające z tego powodu.</p>	

A NOTICE
When delivered, the device does not contain any engine oil.

4. CONTROLS

vibrating plate (Fig. 1)

- A) Guide bar
- B) Electric start (key)
- C) Switch bar (forward and reverse)
- D) Starter battery
- E) Drive motor
- F) Console
- G) Filling hole for excitation oil
- H) base plate
- I) Drive belt / belt guard
- J) Protective frame
- K) Central suspension (anchor point)
- L) drawbar
- M) Gas control lever

diesel engine (Fig. 2 + 3) 1

- muffler
- 2 air filter
- 3 centrifugal clutch
- 4 recoil starter
- 5 oil drain plug
- 6 Oil filler cap / dipstick throttle
- 7 lever
- 8 fuel tap
- 9 fuel tank
- 10 tank cap
- 11 decompression lever
- 12 fuel injection pump oil
- 13 filter
- 14 crankshaft
- 15 E-Start
- 16 ignition key

5. MACHINE TRANSPORT

WARNING

Before transporting the machine or storing it indoors, allow the engine to cool down to avoid burns and the risk of fire.

Furthermore, it must be ensured that persons are not endangered by the machine tipping over or slipping or by machine parts flying up or down.

MACHINE TRANSPORT COMMISSIONING

- Always switch off the engine and let it cool down during transport!
- Close the fuel tap (8), ie set it to "OFF" and align the device horizontally to prevent fuel or oil leakage.
- When transporting over long distances, the fuel tank (9) must be completely emptied.
- Position the drawbar (L) vertically and allow the lock to engage.
- To transport the vibration plate, only use suitable lifting equipment with a minimum load capacity of 250 kg (RP-i31DE) and 350 kg (RP-i38DE).
- Secure the machine on the transport vehicle against rolling, slipping or tipping over and additionally lash it to the protective frame.

A NOTICE

*For loading and transporting compaction equipment with lifting devices, suitable lifting gear must be attached to the designated attachment points.
Loading ramps must be load-bearing and stable.*

5.1 Mechanical lifting

- Before lifting, ensure that the lifting device is capable of safely supporting the weight of the machine (see 'Technical data').
- Attach a suitable lifting hook to the anchor point (K) and lift carefully to avoid injury.
- **NEVER** under suspended loads.

5.2 Moving the machine on the ground

- The transport trolley makes handling easier. By rocking/pushing the machine forwards on the guide bar - with the help of a second person - the trolley can be hooked into the base plate.
DANGER: Only use the transport trolley on level and solid surfaces and for short distances.

5.3 Storage

Storing the vibrating plate for a month or longer:

- Remove dirt and stones from the base plate (H).
- Clean the air filter (2) or replace it if it is heavily soiled or damaged.
- Clean cylinder head fins.
- Change engine oil.
- Cover the vibrating plate and motor to protect them from dust and store them in a dry, clean place.

6. COMMISSIONING

DANGER

Read the safety instructions carefully (see "Safety instructions").

6.1 Recommended fuel

For this engine only **diesel fuel** required (do not use BIO diesel). Only use fresh, clean fuel. Water or impurities in the fuel will damage the fuel system.

(Fig. 4)

tank volume: 3.5 liters (RP-i31DE)
 4.5 liters (RP-i38DE)

DANGER

Refuel in a well-ventilated area with the engine stopped. If the engine has been running immediately before, allow it to cool down first. Never refuel the engine inside a building where fuel vapors can reach flames or sparks.

Use only clean fuel and clean filling containers. Do not spill fuel.

WARNUNG

Diesel fuel is extremely flammable and explosive. You can suffer burns or other serious injuries when handling fuel.

- Turn off the engine and keep away from heat, sparks and flames.
- Only refuel outdoors.
- Wipe up any spilled fuel immediately.

6.2. Drive motor

The engine is operated by hand start or electric start. To make starting easier, the drive motor has an automatic decompression system. This means that the compression is very low when starting, but increases steadily after a few revolutions and then switches to full compression.

The engine speed is controlled by an automatically controlled throttle lever (M) located on the drawbar.

DANGER

The engine is equipped with an oil warning device that switches the engine off or prevents it from starting if the oil level falls below a safe level.

6.3 Before commissioning

A NOTICE

The engine oil must be topped up before the first use! Incorrect oil filling can lead to irreparable damage to the engine. In this case, the seller and manufacturer will not provide any warranty.

(Fig. 5 + 6)

- Use commercially available engine oil with the specification 10W-30 or 10W-40.
- Remove the oil filler cap screw (6) on the engine.
- Fill in engine oil until it is visible in the thread of the filler opening (= lower edge of the oil filler opening). Capacity approx. 1.1 liters (RP-i31DE) and 1.6 liters (RP-i38DE). **Do not overfill!**

Before starting work and after 4 hours of use, check:

- the engine oil level – top up if necessary
- the fuel level – the tank should be at least half full
- the condition of the air filter – clean or replace if necessary
- the condition of the fuel lines
- the external screw connections are tight – pay particular attention to the drive belt protective cover or motor and vibrator, loose screws can damage the machine
- Belt tension -- the normal vibration should be 10-15 mm when the belts are pressed in with force halfway between the two pulleys. If the belts have too much play, the impact may be insufficient or the vibration may be uncontrolled, causing damage to the machine.
- the exciter oil level – top up if necessary

DANGER

The plate must be level during the test. If defects are found, the machine must not be used until the defect has been remedied.

6.4 HAND START (Fig. 7)

1. Open the fuel tap (8) by moving the OPEN/CLOSE lever all the way down (vertical).
2. Turn the throttle control lever (7 or M) to throttle position 1/2 - 3/4.
3. Pull the starter handle (4) slightly until resistance is felt and then let it roll in again.

A NOTICE

Do not let the starter handle snap back against the engine, but carefully guide it back by hand to avoid damaging the starter.

4. Press the decompression lever (11) down until it stops.
5. Pull the starter rope firmly but not abruptly. The engine starts.

DANGER

If you attempt to start the engine again, wait until it stops.

⚠ WARNING

The vibration starts when the engine starts up.

A NOTICE

Do not operate the decompression lever while the engine is running.

6. Bring the engine to maximum speed.
7. Push the switch bar (C) in the direction of travel.

DANGER

The forward and reverse speed can be continuously varied.

6.5 ELECTRIC START (Fig. 8)

1. Open the fuel tap (8) by moving the OPEN/CLOSE lever all the way down (vertical).
2. Turn the throttle control lever (7 or M) to throttle position 1/2 - 3/4.
3. Decompression lever (11) remains in position.
4. (Fig. 8) Insert the key into the ignition lock and turn it to the right to the operating position. Hold it until the engine starts.

DANGER

If you attempt to start the engine again, wait until it stops.

⚠ WARNING

The vibration starts when the engine starts up.

5. As soon as the engine is running, release the starter key.
6. If any irregularities occur, stop the engine immediately, locate the fault and rectify it.
7. Before starting the engine, turn the key back to the left.

A NOTICE

Do not operate the decompression lever while the engine is running.

8. Bring the engine to maximum speed.
9. Push the switch bar (C) in the direction of travel.

DANGER

The forward and reverse speed can be continuously varied.

6.6 Switching off the engine (Fig. 8)

WARNING

When operations are interrupted or after work has finished, protect the starter key from unauthorized access.

A NOTICE

Never stop the engine using the decompression lever, as this will inevitably cause damage to the decompression device.

1. Set the throttle control lever (M) to the idle position, ie move the lever back as far as it will go.
2. After the engine has stopped, turn the key anti-clockwise and remove it.
3. Then close the fuel tap (8) by moving the OPEN/CLOSE lever all the way to the right (horizontal).

7. OPERATION

The vibrating plate is equipped with a centrifugal clutch, so that the transmission is not driven at idle speed. As the speed increases, the clutch engages and the transmission begins to rotate. For proper functioning, the engine must be set to maximum speed.

7.1 Forward and reverse travel

The direction of travel is determined with the control bar (C). Depending on the position of the control bar, the vibrating plate moves forward or backward.

compaction (Fig. 9)

1. Set the shift lever (C) to the middle
2. Move the throttle control lever (M) to full throttle position
3. Adjust the driving speed with the throttle control lever (M)
4. Adjust the direction of travel using the switch (C).

Depending on the position of the control bar (C), the vibrating plate compacts in forward or reverse motion. Hold the guide bar (A) firmly with both hands. Steer the device by moving the handle to the left or right. When working on slopes, push the vibrating plate forward slightly. When working on inclined surfaces, reduce the speed by holding the vibrating plate back.

When moving backwards, the operator must guide the vibrating plate from the side to protect himself from being crushed between the drawbar end/device and the obstacle.

The work area must first be cleared of obstacles and tripping hazards must be eliminated. Extreme caution is required on uneven terrain, in narrow pits and when compacting coarse material to avoid becoming trapped and losing control of the machine. Make sure you have a secure footing!

Use the machine in such a way that hand injuries caused by solid objects are avoided.

DANGER!

Only approach slopes from below. A slope that can be easily mastered uphill can also be safely driven downhill. The operator must never stand in the direction of fall. Never work partially or completely at an angle to the slope.

A NOTICE

A maximum inclination of 20° must not be exceeded. Exceeding this inclination would result in a failure of the engine lubrication and thus inevitably a defect in important engine components.

7.2 Recommendation for compaction

Moisture or extremely loose soils lead to poor adhesion between the tiles. This increases the risk of accidents.

- To achieve optimum compaction, 3 - 4 passes are required depending on soil conditions such as moisture, grain distribution, etc.
- However, soil with too much moisture can prevent good compaction. Allow the soil to dry out before compacting.
- Very dry soil will create a lot of dust when the vibrating plate is working. Adding moisture can improve compaction and reduce air filter maintenance.

A NOTICE

Do not use the plate compactor on concrete or hard or tightly compacted ground surfaces. In such cases, the device will begin to impact instead of vibrating, causing damage to the plate and the motor.

7.3 Compaction without mounting plates

If the vibrating plate is operated without an attachment plate, the screw set must be screwed into the threads provided on the base plate to prevent damage to the threads.

8. MAINTENANCE

WARNUNG

Only carry out maintenance work when the engine is switched off.

Legal regulations must be observed for the handling and disposal of used oil, filters and cleaning agents.

Protect the starter key from unauthorized access. Disconnect the negative terminal of the battery.

After completing maintenance, check that all tools have been removed from the engine and all guards have been replaced.

Before starting, make sure that no one is in the danger area of the engine or device.

8.1 Maintenance plan

Please carry out and adhere to these maintenance tasks regularly to avoid damage and to ensure that the safety devices function properly. Failure to do so may result in an accident!

Task	Daily <small>before Operation</small>	After the first 20 hours	All 2 weeks or 50 hours	Every month or every 100 Hours	Each year or every 300 Hours
machine complete - Visual inspection for completeness and damage	X				
Check fuel tank: - fill level - tightness - lines - tank cap	X				
air filter insert	check / clean	X			
	exchange				X
Check that the fastening screws are tight: - protective frame/central suspension	X				
Check external fasteners: - Switch bar (forward and reverse) - gas control lever - engine linkage - Drive belt protective cover - Exciter / Plate connection	X				
engine oil	check	X			
	change		X ₁	X	

Task		Daily <small>before Operation</small>	After the first 20 hours	All 2 weeks or 50 hours	Every month or every 100 Hours	Each year or every 300 Hours
V-belt	check / adjust			X		
	change				X	
Re-grease the drawbar and transport lock					X	
pathogen oil	check			X		
	change					X
battery - Visual inspection for obvious damage		X				

•After initial commissioning

8.2 Engine oil

Check oil level (Fig. 6)

When checking the oil level, the engine must be horizontal and switched off.

- Remove any dirt from the oil filling area.
- Remove the oil filler cap/dipstick (6) and wipe clean.
- Reinsert the dipstick into the oil filler neck without screwing it in, then remove it to check the oil level.
- If the oil level is close to or below the lower mark on the dipstick, then fill with the recommended oil (see Technical Data) up to the upper mark (= lower edge of the oil filler opening). Do not overfill!
- Insert the oil filler cap/dipstick and tighten it tightly.

A NOTICE

A low oil level can cause engine damage. In this case, sellers and manufacturers will not provide any warranty.

Changing the engine oil (Fig. 10)

The engine must be level and turned off. Only drain the engine oil when it is warm.

WARNING

Danger of scalding from hot oil!

- Allow the engine to warm up.
- Switch off the engine.
- Remove dirt from the area around the oil filler (6) and the oil drain plug (5).

- Place a sufficiently large container under the oil drain plug to collect the used oil.
- To drain the oil, remove the oil filler cap (6) and the oil drain plug (5).
- Allow all oil to drain off, lifting the machine slightly at the back if necessary.



DANGER!

Used engine oil must be disposed of in an environmentally friendly manner. We recommend that you hand over used oil in a closed container to a recycling center or a collection point for used oil. Do not pour used oil into the garbage can, into the sewer system, down a drain or onto the ground.

- Reinstall the cleaned drain plug (5) and tighten it.
- With the engine lying horizontally, fill up with recommended engine oil up to the max. mark on the dipstick. For oil quantity and oil type, see "Technical Data".
- Screw the filler cap/dipstick (6) back in.

8.3 Dry air filter

Frequent cleaning of the air filter (2) prevents carburetor malfunctions. The air filter insert filters the air through a very fine lamella system and must under no circumstances be washed out or blown out with compressed air.

If the engine starts to smoke and the engine performance decreases at the same time, this is a sign that the filter is clogged. Clean the air filter and tap it lightly so that dust falls out of the paper element.

Clean the air filter and change the air filter element

- Loosen the wing nut and carefully remove it with the cover.
- Carefully remove the air filter element and check for holes or cracks.
- If dry, shake and tap the air filter element.
- Wipe dirt from the inside of the filter housing with a clean, damp cloth.
- Replace the air filter element if necessary.
- Reinsert the filter.
- Replace the cover and secure it with the wing nut.

A NOTICE

Never run the engine without an air filter element or with a damaged one. This will allow dirt to enter the engine, which can cause serious engine damage. In this case, the seller and manufacturer will not provide any warranty.

8.4 Drive belt

On new machines or after installing a new belt and during the next 4 hours of operation of the plate, the belt tension must be checked. Thereafter, check the belt every 50 hours and tighten if necessary.

The machine must be level and parked.

Tensioning / changing the drive belt (Fig. 11)

1. Loosen the 2 screws (y) on the belt guard (I) and remove the belt guard upwards.
2. Check belt tension.
3. Re-tighten the drive belt (a) if the belt gives way by more than 10-15 mm (thumb pressure).
4. Loosen the 4 lock nuts (M12) to which the rubber buffers are attached.

For tensioning of the drive belt, turn all 4 eccentric discs (X) upwards. **To loosen up** of the drive belt, turn all 4 eccentric discs (X) downwards.

A NOTICE

Make sure that the pulleys of the clutch (b) and exciter (c) are aligned.

5. Tighten all 4 lock nuts (M12) again.
6. Replace the belt guard and screw it back on.

8.5 Lubrication of the exciter (Fig. 12)

When checking the exciter oil level, the engine must be horizontal and switched off.

Check exciter oil level:

Check the oil level in the exciter every 50 hours of operation.

- Place the machine horizontally.
- Remove any dirt from the area around the filling hole.
- Remove the screw on the filling hole (G)
- Oil level should reach up to the thread of the drain plug.
- If necessary, top up with SAE 80W-90 gear oil. (Use a funnel)
- Close the filling hole (G) again with the screw and the sealing ring.

Changing the exciter oil:

Change the exciter oil every 300 operating hours

The engine must be level and turned off. Allow the engine oil to drain when the engine is warm.

WARNING

Danger of scalding from hot oil!

- Allow the engine to warm up.
- Switch off the engine.

- Remove the screw on the filling hole (G).
- Remove drain plug (X).
- Drain the transmission oil into a suitable shallow container.



DANGER

Used engine oil must be disposed of in an environmentally friendly manner. We recommend that you hand over used oil in a closed container to a recycling center or a collection point for used oil. Do not pour used oil into the garbage can, into the sewer system, down a drain or onto the ground.

- Screw the drain plug (X) back on with the sealing ring.
- Add gear oil SAE 80W-90 through the filler hole (G) (approx. 600 ml) until the oil reaches the thread of the screw. (Use a funnel)
- Close the filling hole (G) again with the sealing thread.

A NOTICE

DO NOT overfill. Too much oil in the exciter can reduce performance and damage the drive belt.

8.6 Battery (Fig. 13)

The vibrating plate is equipped with a maintenance-free battery - 12V 35 Ah.

When handling batteries, follow the safety symbols on the battery. The symbols have the following meaning:



Notice

Follow the instructions for use.



eye protection

Be sure to wear eye protection.



Children

Keep battery and acid away from children.



risk of explosion

When batteries are charged, a explosive mixture is released which can lead to an explosion if used improperly. Caution is advised and safety precautions must be observed.



Fire, sparks, open flames and smoking prohibited

Fire, smoking and open flames must be avoided at all costs. Short circuits and sparks should also be avoided.

**risk of chemical burns**

Wear protective gloves and eye protection, as battery acid is highly corrosive. Avoid tipping over batteries.

**warning**

Batteries should never be exposed to direct sunlight.

**disposal**

Only dispose of batteries in the designated containers or collection points. Never dispose of batteries in household waste. Observe all safety instructions when transporting batteries.

filling the battery

This battery is factory filled and fully sealed. No action is required.

A hydrometer shows the condition of the battery.

Sight glass green = OK

Sight glass black = loading Sight

glass white = changing

charging the battery

Maintenance-free batteries retain their voltage for much longer, but generally do not survive a total discharge. That is why a maintenance-free battery should always be removed over the winter and recharged after 3 months. It should be stored in a warm, dry place.

DANGER

Maintenance-free batteries may only be charged with a charger with electronic charging voltage regulation (IWU characteristic curve). Unregulated chargers destroy such batteries by overcharging.

⚠ WARNING

ALWAYS switch off the charger before disconnecting the charged battery and NEVER bring an open flame to the battery! Danger of explosion due to oxyhydrogen!

change the battery

When changing the battery, please note

Expansion: Turn off the ignition switch, **first negative connection** then remove the positive connection, after removing the battery make sure that the surface is free of foreign objects and level (damage to the battery base!)

Installation:

First positive pole then connect the negative pole and grease the terminals with anti-acid grease. It is important to check the connection parts for cleanliness before fastening and clean them if necessary. The battery positive pole must be covered with insulation.

A NOTICE

Replace a defective battery only with an identical or equivalent battery.

maintenance

Keep the battery clean and dry

Clean the battery only with a damp cloth, do not use a wire brush.

Protect the battery from cooling down too much

Check battery and connections for tightness.

Remove deposits and corrosion from poles.

Grease pole terminals with acid protection.

8.7 Cleaning the base plate

After each use, dirt and stones that have accumulated under the engine console must be removed. To prevent the engine from overheating, the cylinder cooling fins in dusty areas must be kept clean.

9. ENVIRONMENT

Please recycle waste and do not dispose of it as garbage. All tools, hoses and packaging must be sorted, taken to the local recycling center and disposed of in an environmentally friendly manner.

Batteries and rechargeable batteries must be removed from the devices and disposed of separately.

The site of operation must be protected against contamination with leaking operating fluids.

Used or remaining operating materials must be recycled in accordance with the environmental protection regulations applicable at the place of use.

Please contact your local waste disposal authority to find out about options for environmentally friendly and proper disposal.

10. TROUBLESHOOTING

Disturbance	Caused	remedy
pre- and Rewind speed is too low. The disk does not reach the maximum speed	Gas regulation incorrectly installed	Install gas regulation correctly
	Soil is too wet, the plate gets stuck	allow drying time
	Drive belt too loose, slips on pulleys	Adjust or replace drive belt. Check engine bolts for tightness
	air filter clogged	Clean or replace
No shaking function	Damage to the exciter or plate	Contact your dealer
oil loss from the engine	Worn seals, radial sealing rings	Contact your dealer
Record runs irregularly or hits	Ground surface is too hard	Compaction of the soil surface is not possible
	Shock absorber too loose or damaged	Contact your dealer
Engine cannot be started	No fuel in the tank	refueling
	fuel tap closed	Open the fuel tap
	air filter dirty	Clean the air filter
	ignition lock defective	Contact your dealer
	battery discharged	charging the battery
	oil shortage	refill engine oil

If these measures do not resolve the problem or if errors occur that are not listed here, have your device checked by a specialist.

11. TECHNICAL DATA

Model:		RP-i31DE	RP-i38DE
drive motor:	type	Air-cooled single-cylinder four-stroke diesel engine with electric start	
displacement:	cm ³	349	441
Rated power:	kW	4.9	6.8
Engine speed:	1/min	3600	
Fuel:		Diesel	
Fuel tank capacity:	l	3.5	4.5
Engine oil:		SAE 10W-30 / SAE 10W-40	
Engine oil content:	l	~ 1.1	~ 1.6
Battery:	type	12V 35Ah - EN240A or other equivalent battery	
Plate size (L x W):	mm	approx. 700 x 360	approx. 830 x 480
Mounting plates (L x W):	mm	700 x 100 each	each 830 x 100
Dimensions (L x W x H):	mm	1310 x 520 x 895	1360 x 680 x 1088
Centrifugal force:	kN	30,5	38
compaction depth:	cm	50	90
Area performance:	m ² /h	about 450	ca. 416
Max. feed:	m/min	up to 25	up to 21
Frequency:	Hz	67	63
Max. permissible inclination of the engine:	degree	20°	
Power transmission:		From drive motor to automatic centrifugal clutch and V-belt directly on the pathogen	
Weight:	kg	199	292
Sound power level LWA:	dB(A)	108	

The values given are emission values and do not necessarily represent safe workplace values. Although there is a correlation between emission and immission levels, this cannot be used to reliably determine whether or not additional precautionary measures are necessary. Factors that influence the current immission level at the workplace include the nature of the work area, other noise sources, e.g. the number of machines and other adjacent work processes. The permissible workplace values can also vary from country to country. However, this information is intended to enable the user to make a better assessment of hazard and risk.

12. WARRANTY / GUARANTEE / CUSTOMER SERVICE

WARRANTY

The machine is subject to the statutory warranty period. Any defects that can be proven to be due to material or assembly errors must be reported to the seller immediately. Proof of purchase of the machine must be provided by presenting the invoice and receipt when making a warranty claim.

The warranty is excluded with regard to parts if defects have arisen due to natural wear and tear, temperature and weather influences, as well as defects resulting from negligent assembly, faulty connection, incorrect fuel/fuel mixture, installation, operation, maintenance, lubrication or force.

Furthermore, no warranty is provided for damage caused by inappropriate or improper use of the machine, such as improper modifications or repair work carried out by the owner or third parties, or intentional overloading of the machine. Wear parts with a limited service life (e.g. V-belts, clutch, throttle cable, spark plug, air filter, battery, blades, hoses, wheels, tools and other aids), as well as all setting and adjustment work, are excluded from the warranty.

GUARANTEE

LUMAG guarantees impeccable quality and, without prejudice to the statutory warranty, provides a guarantee in the event of material or manufacturing defects. The guarantee for LUMAG products is 24 months for exclusively private use, and 12 months for commercial or professional use or rental, from the date of delivery.

The buyer must always prove warranty claims by providing the original purchase receipt. A copy of this must be enclosed with the warranty application. The buyer's address and machine type must be clearly identifiable for professional or commercial use. Without the original purchase receipt, we can only carry out the repair for a fee.

Please do not send a machine back to us without a SERVICE NUMBER that you have received from our service department. If we receive machines unsolicited, we cannot accept and process them. To request a SERVICE NUMBER, please contact our service team at: info@lumag-maschinen.de

Please clearly label the shipping box with the SERVICE NUMBER to ensure quick identification. Warranty work is only carried out by our LUMAG service workshop. Defects that occur within the warranty period due to material or manufacturing errors must be remedied by repair if they have arisen despite proper operation and care of the machine. We reserve the right to make two repairs if the same defect occurs. If repair fails or is impossible, the machine can be exchanged for an equivalent machine. If exchange is also unsuccessful or impossible, there is the option of a replacement. Normal wear and tear, natural aging, improper use, and cleaning, care and adjustment work are generally not covered by the warranty (e.g. cutting device, air and fuel filter, spark plug and recoil starter, drive belt, tires, etc.). Due to operation and use, some components are subject to normal wear and tear, even when used as intended, and may need to be replaced in good time.

CUSTOMER SERVICE

If you have any technical questions, information about our products or would like to order spare parts, our service team is available as follows:

Service time: Monday to Thursday from 7.30 a.m. to 12 noon and 1 p.m. to 5 p.m.
Friday from 7.30 a.m. to 12 noon
Phone: + 49 / 8571/92 556-0
Fax: + 49 / 8571/92 556-19
Mail: info@lumag-maschinen.de

EC DECLARATION OF CONFORMITY

13. EC DECLARATION OF CONFORMITY

In accordance with the provisions of the EC directives

- Machinery Directive 2006/42/EC
- Outdoor Directive 2000/14/EC - 2005/88/EC

the company explains:

LUMAG GmbH
 Robert-Bosch-Ring 3
 D-84375 Kirchdorf/Inn
 Phone: 0049 / (0)8571 / 92 556-0
 Fax: 0049 / (0)8571 / 92 556-19

that the product

Device type: vibrating plate (compaction machine)
 Device type: RP-i31DE, RP-i38DE

complies with the essential protection requirements of the above-mentioned EC Directives.

Person authorized to compile the technical documentation: Christopher
 Weißenhorner

The declaration of conformity refers only to the machinery in the condition in which it was placed on the market; it does not take into account any parts and/or interventions subsequently fitted by the end user.

Kirchdorf, April 2, 2015

Manfred Weißenhorner, Managing Director

Place, date

distributor, authorized representative

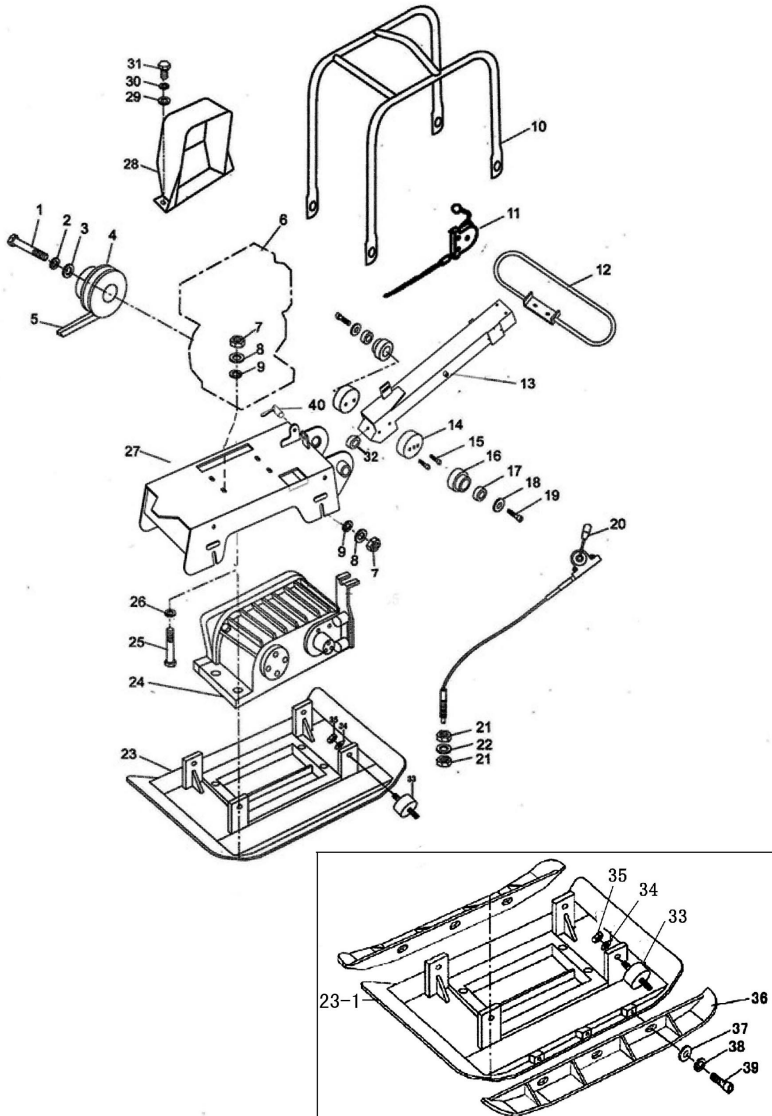


Status: 04/2015

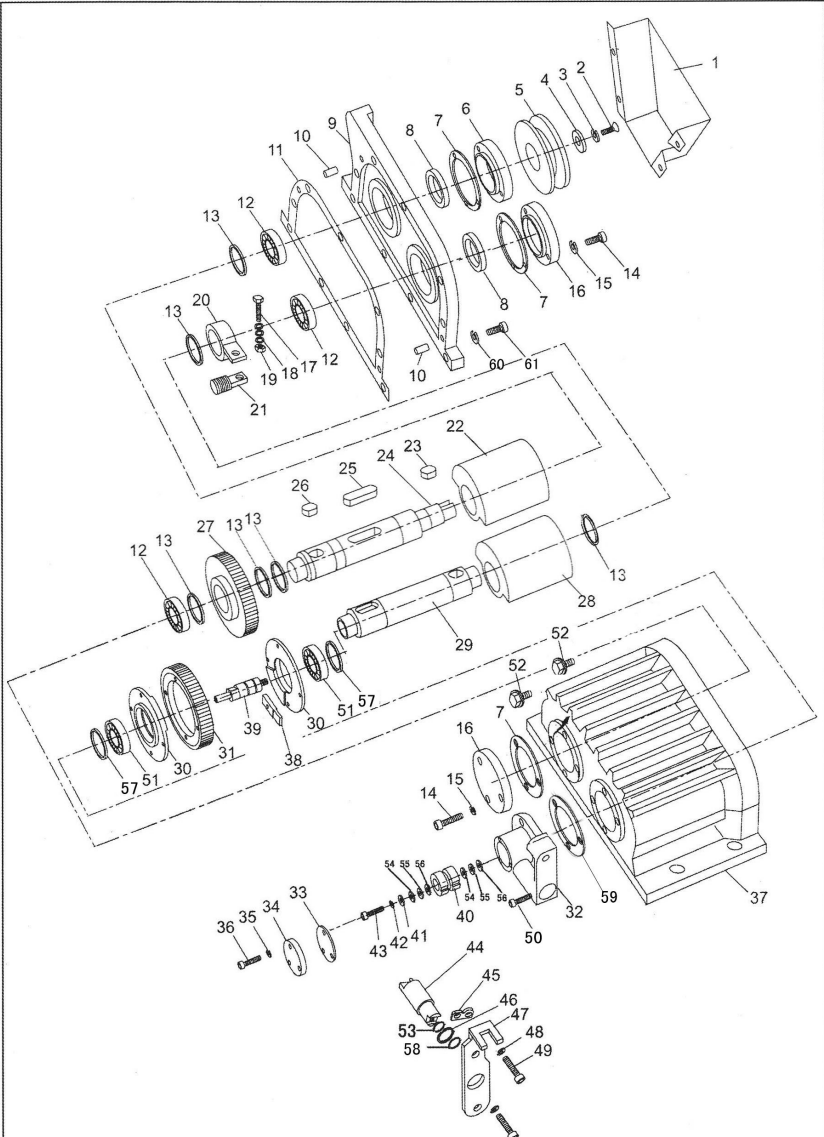
Subject to change.

14. COMPONENTS OF THE MACHINE

RP-i31DE

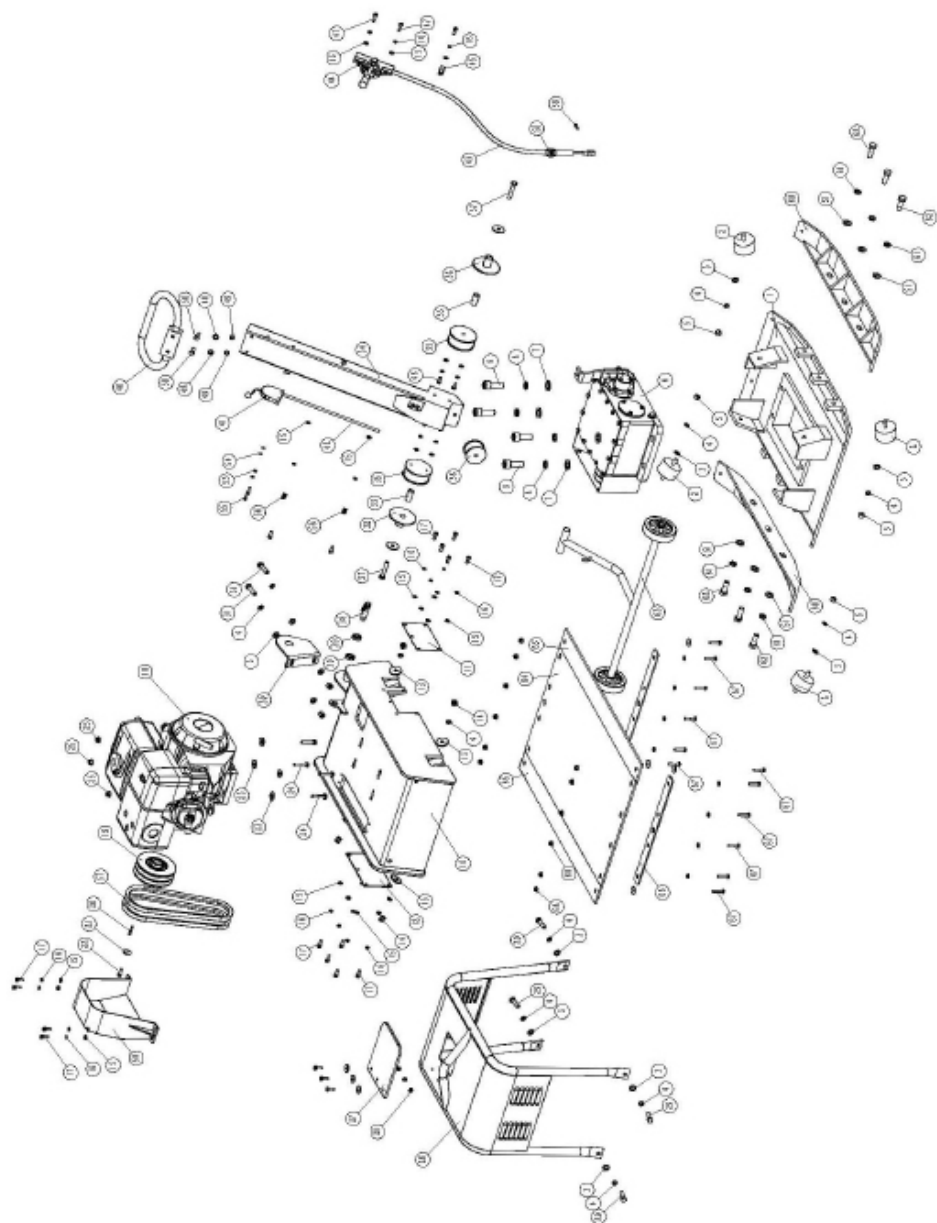


COMPONENTS OF THE MACHINE

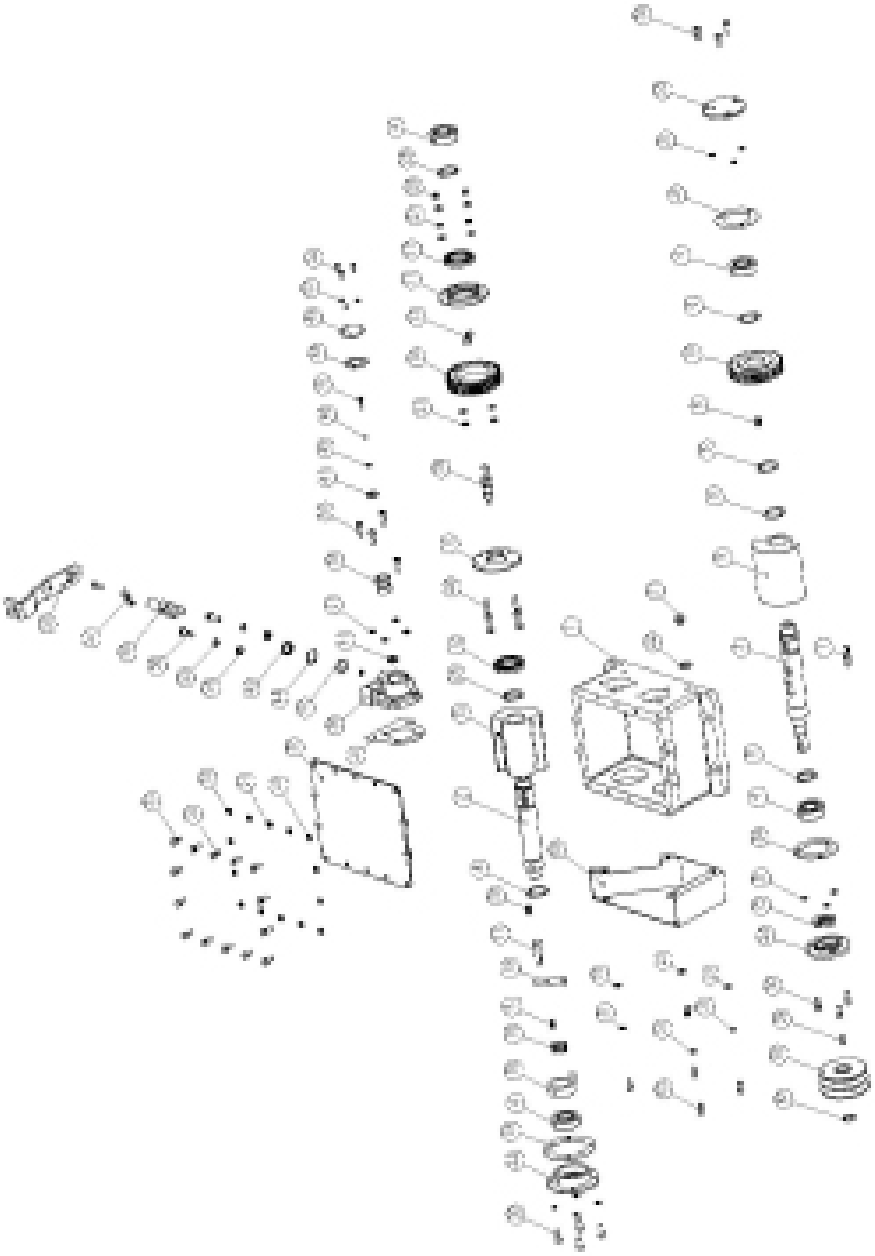


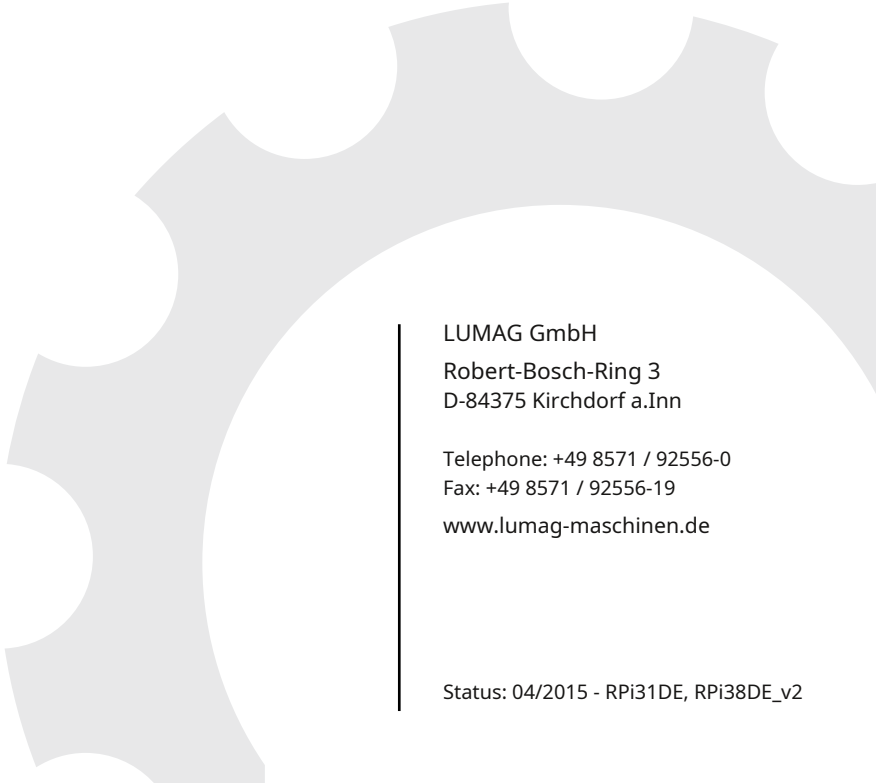
Vibrator Assembly

RP-i38DE



COMPONENTS OF THE MACHINE





LUMAG GmbH
Robert-Bosch-Ring 3
D-84375 Kirchdorf a.Inn

Telephone: +49 8571 / 92556-0
Fax: +49 8571 / 92556-19
www.lumag-maschinen.de

Status: 04/2015 - RPi31DE, RPi38DE_v2